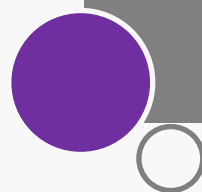
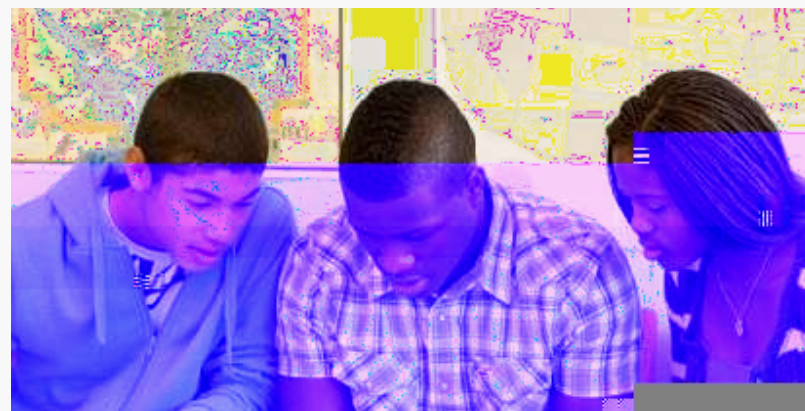


**Reach Your
College Goals**

An Overview

- ! Why Take the PSAT/NMSQT®
- ! Planning for College and Careers
- ! What to Expect ! and When



About the PSAT/NMSQT®

**PRELIMINARY SAT/NATIONAL MERIT
SCHOLARSHIP QUALIFYING TEST**

The PSAT/NMSQT® : Reach Your College Goals

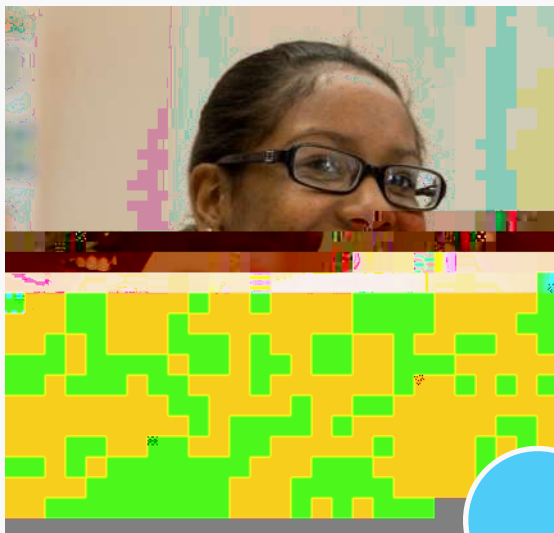
The PSAT/NMSQT

- ! is more than just a test score.
- ! provides personalized feedback on your academic strengths and ! the areas that need improvement.
- ! gives you the tools you need to improve your skills and get ready ! for the SAT®, college, and a career.

The PSAT/NMSQT® Evaluates



The PSAT/NMSQT® as a Preliminary SAT®



PSAT/NMSQT and SAT

- ! Evaluate the same skills, as appropriate for grade level
- ! Have the same format and types ! of questions (except essay)
- ! Are administered in the same way ! so if you take the PSAT/NMSQT, you know what to expect on SAT test day

The PSAT/NMSQT® Helps Get You Ready for the SAT®

- ! On average, students who take the PSAT/NMSQT score 120 points higher on the SAT than those who don't.
- ! Students taking the PSAT/NMSQT twice score even higher.
- ! The PSAT/NMSQT provides tools to help you improve your skills before ! you take the SAT.



Personalized PSAT/NMSQT® Skills Feedback



The PSAT/NMSQT gives you the skills feedback you need to get ready for the SAT® and college.

PSAT/NMSQT skills feedback is:

- ! Personalized — you know exactly the skills you need to improve
- ! Early — you have plenty of time to improve
- ! Actionable — you have the resources you need to improve

The PSAT/NMSQT® Connects You to College Scholarships and Academic Recognition

National Merit Scholarship Corporation scholarship and recognition programs

- ! National Merit Program
- ! National Achievement Program
- ! www.nationalmerit.org



Other scholarship and recognition programs

- ! National Hispanic Recognition Program
- ! National Scholarship Service
- ! The Telluride Association
- ! www.collegeboard.com/psat



The PSAT/NMSQT® and Student Search Service® : Connecting You to Colleges and Scholarships

Student Search Service ! helps interested colleges and scholarship programs find you.

- ! When you register for the PSAT/NMSQT, you will have the opportunity to say “Yes” ! to Student Search Service
- ! Student Search Service shares some of the demographic and contact information that you provide
- ! Student Search Service does not share: scores, Social Security number, ! telephone number



PSAT/NMSQT® Score Reports

Receiving your results

- ! You will receive your paper Score Report from your school — ! generally sometime in December or January.
- ! You will be able to access an enhanced online score report through ! My College QuickStart™ once you've received your paper score report.



PSAT/NMSQT® Score Report *Plus*: Looking beyond your scores



My College QuickStart™: Improve Your Skills

Look beyond scores

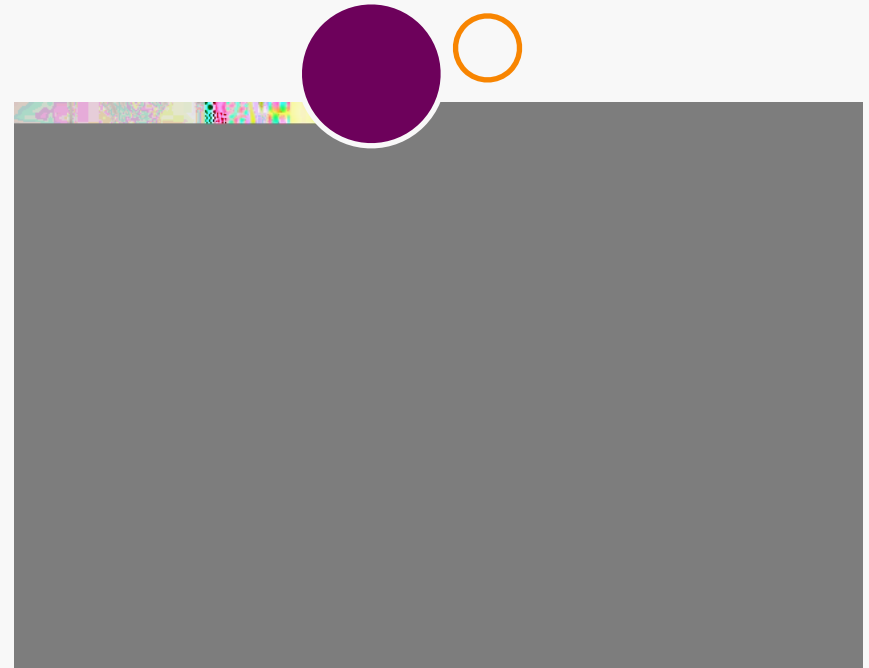
- ! Personalized feedback on the skills !
need to improve
- ! Hundreds of practice questions and
explanations
- ! A full-length SAT® Practice Test



My College QuickStart™: Plan for College and Careers

Explore your future

- ! Personality test to help you learn more about your strengths and interests
- ! Hundreds of majors and careers ! to explore
- ! Customizable college search



PSAT/NMSQT® Administration Dates

2010 Test Dates:

- ! Wednesday, Oct. 13
- ! Saturday, Oct. 16



PSAT/NMSQT® Test Day

You should bring:

- ! Two No. 2 pencils.
- ! An approved calculator for use on math sections. You are encouraged to bring a calculator that you're comfortable using.

You should know:

- ! Social Security number (optional)
- ! E-mail address (optional)

PSAT/NMSQT® Questions: Making Educated Guesses



The PSAT/NMSQT is scored differently from other tests you've taken.

How it works:

- ! When you are uncertain of the answer to a question on the PSAT/NMSQT, ! it will benefit you to use educated guessing.
- ! Educated guessing means guessing an answer whenever you can eliminate ! one or more of the choices as definitely wrong.
- ! Random guessing is not recommended since " point is deducted for each ! wrong answer.
- ! If you can't eliminate one or more of the choices as definitely wrong, skip that question and move on to the next one.

PSAT/NMSQT® Official Student Guide



